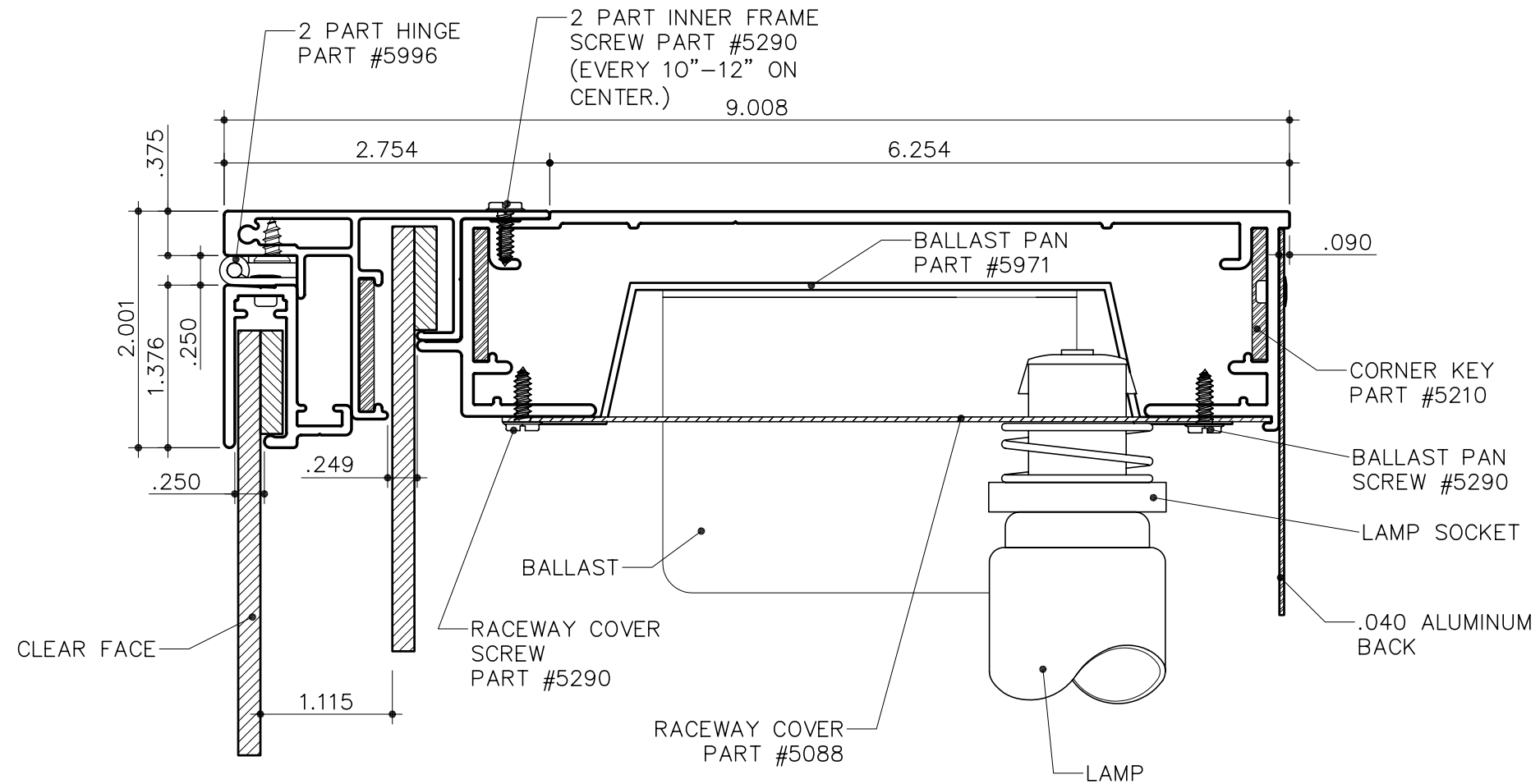


STD-6 for Rigid Faces - Electrical

2 Part 8" S/F Body
 Part #1927

2 Part Inner Frame
 Part #1960

2 Part Outer Frame
 Part #1942

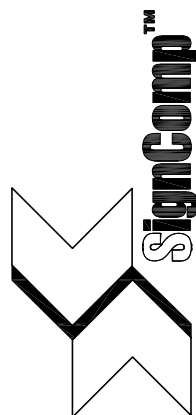


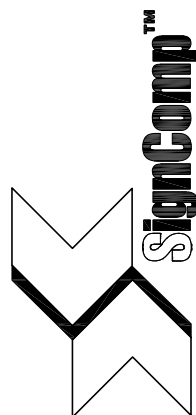
SECTION DETAIL ELECTRICAL

SCALE : 3/4" = 1"

NOTES:

1. Add 1 3/4" to size of cabinet (vertical or horizontal) when the size of the cabinet is the same as the nominal lamp length.
2. SignComp does not supply the Ballast(s), Lamps, Lamp Sockets.



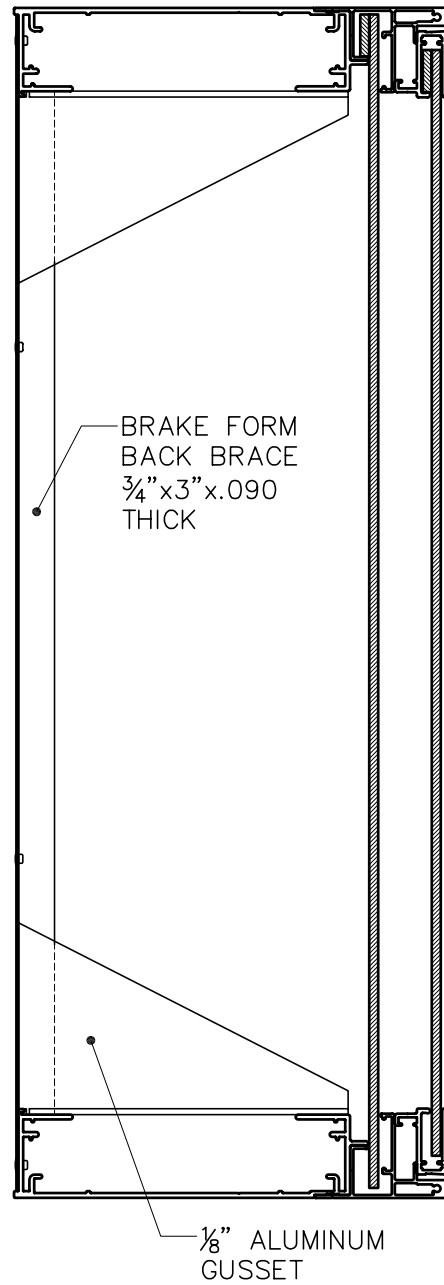


STD-6 for Rigid Faces – Structural Corner
(Mechanically Fastened)

2 Part 8" S/F Body
Part #1927

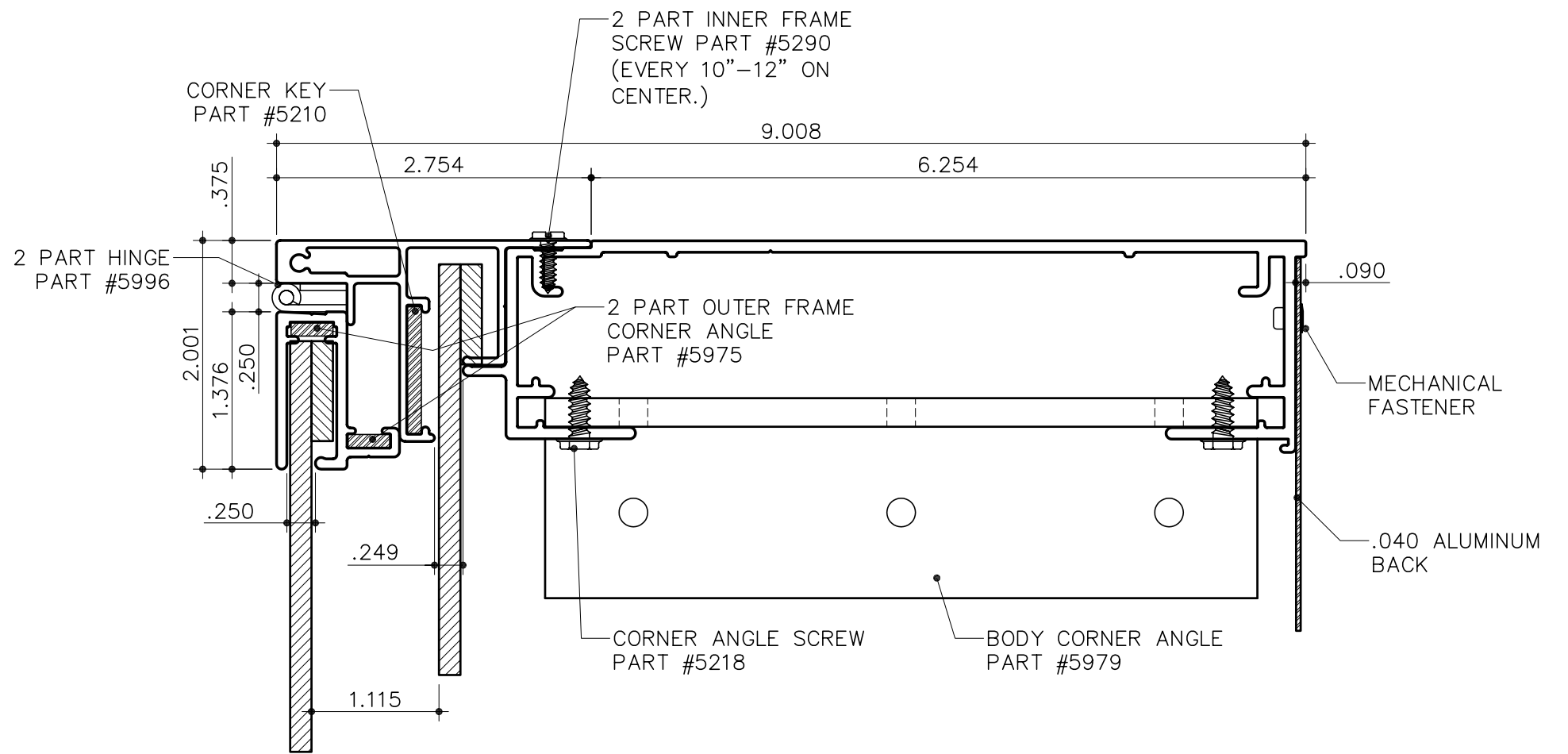
2 Part Inner Frame
Part #1960

2 Part Outer Frame
Part #1942



FULL SECTION

SCALE : 3" = 1"

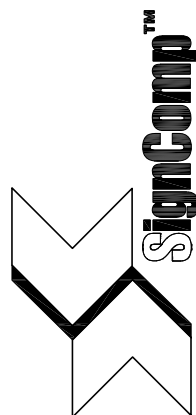


SECTION DETAIL STRUCTURAL (BODY CORNER ANGLE MECHANICALLY FASTENED)

SCALE : 3/4" = 1"

NOTES:

1. Add 1 3/4" to size of cabinet (vertical or horizontal) when the size of the cabinet is the same as the nominal lamp length.
2. When using a top or bottom hinge application deduct 7/8" from the overall width of cabinet and 1/8" from the overall height of the cabinet to get cut measurements for 2 Part Outer Frame.
3. When using a side hinge application deduct 1/8" from the overall width of cabinet and 7/8" from the overall height of the cabinet to get cut measurements for 2 Part Outer Frame.

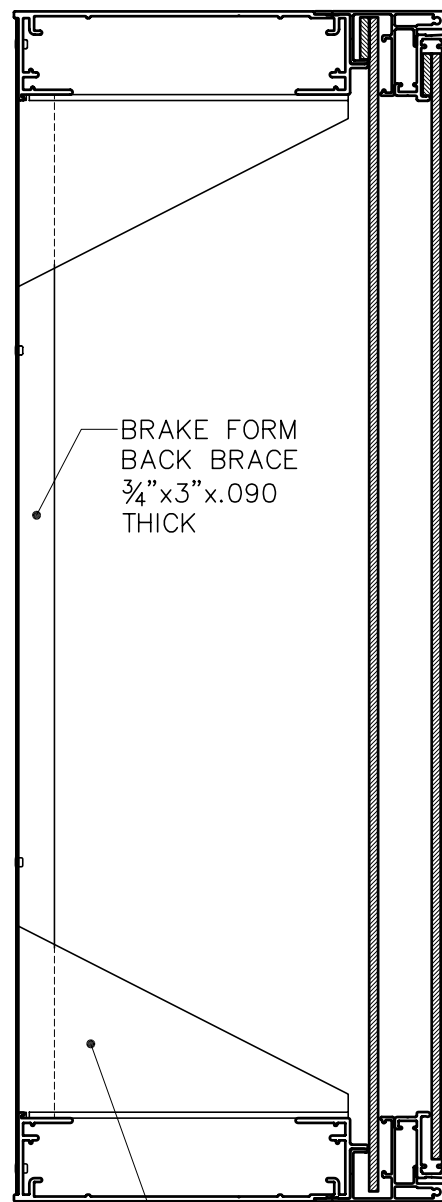


STD-6 for Rigid Faces – Structural Corner
(Body Corner Angle Glued)

2 Part 8" S/F Body
Part #1927

2 Part Inner Frame
Part #1960

2 Part Outer Frame
Part #1942

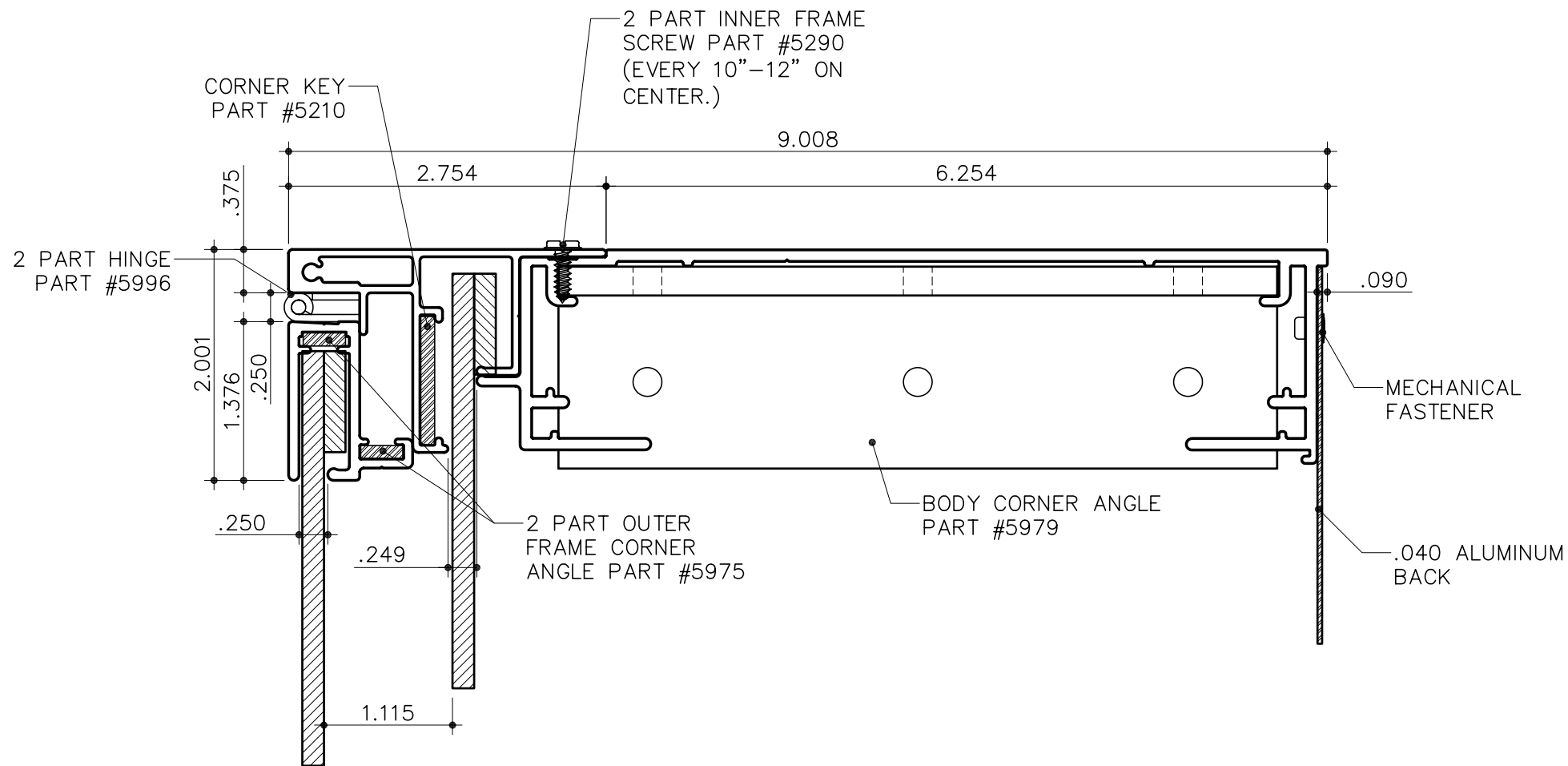


BRAKE FORM
BACK BRACE
3/4" x 3" x .090
THICK

1/8" ALUMINUM
GUSSET

FULL SECTION

SCALE : 3" = 1"



CORNER KEY
PART #5210

2 PART INNER FRAME
SCREW PART #5290
(EVERY 10"-12" ON
CENTER.)

2 PART HINGE
PART #5996

9.008

6.254

.090

MECHANICAL
FASTENER

BODY CORNER ANGLE
PART #5979

.040 ALUMINUM
BACK

2 PART OUTER
FRAME CORNER
ANGLE PART #5975

2.001

.375

2.754

1.376

.250

.250

.249

1.115

SECTION DETAIL STRUCTURAL (BODY CORNER ANGLE GLUED)

SCALE : 3/4" = 1"

NOTES:

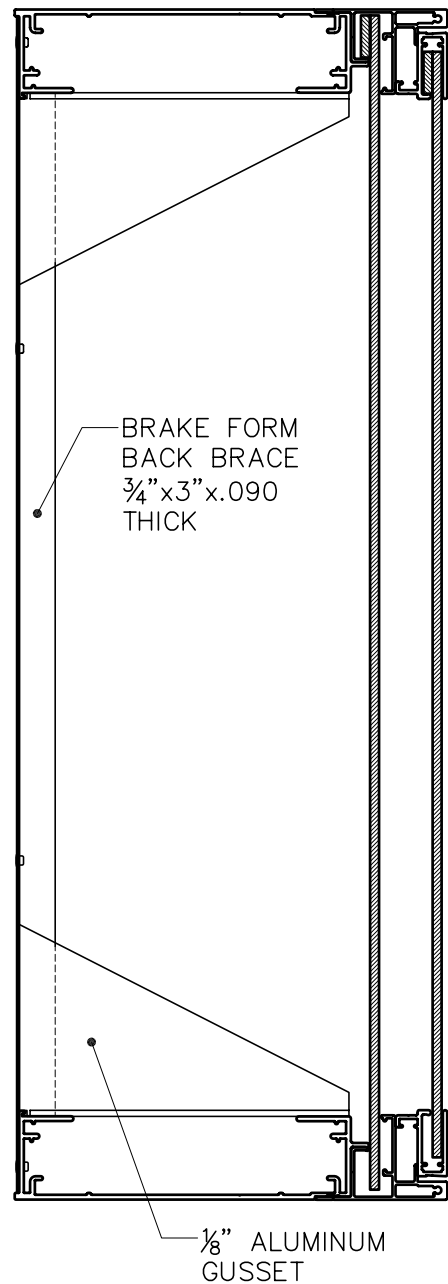
1. Add 1 3/4" to size of cabinet (vertical or horizontal) when the size of the cabinet is the same as the nominal lamp length.
2. When using a top or bottom hinge application deduct 7/8" from the overall width of cabinet and 1/8" from the overall height of the cabinet to get cut measurements for 2 Part Outer Frame.
3. When using a side hinge application deduct 1/8" from the overall width of cabinet and 7/8" from the overall height of the cabinet to get cut measurements for 2 Part Outer Frame.

STD-6 for Rigid Faces – Structural Corner
 (Welded W/Corner Keys)

2 Part 8" S/F Body
 Part #1927

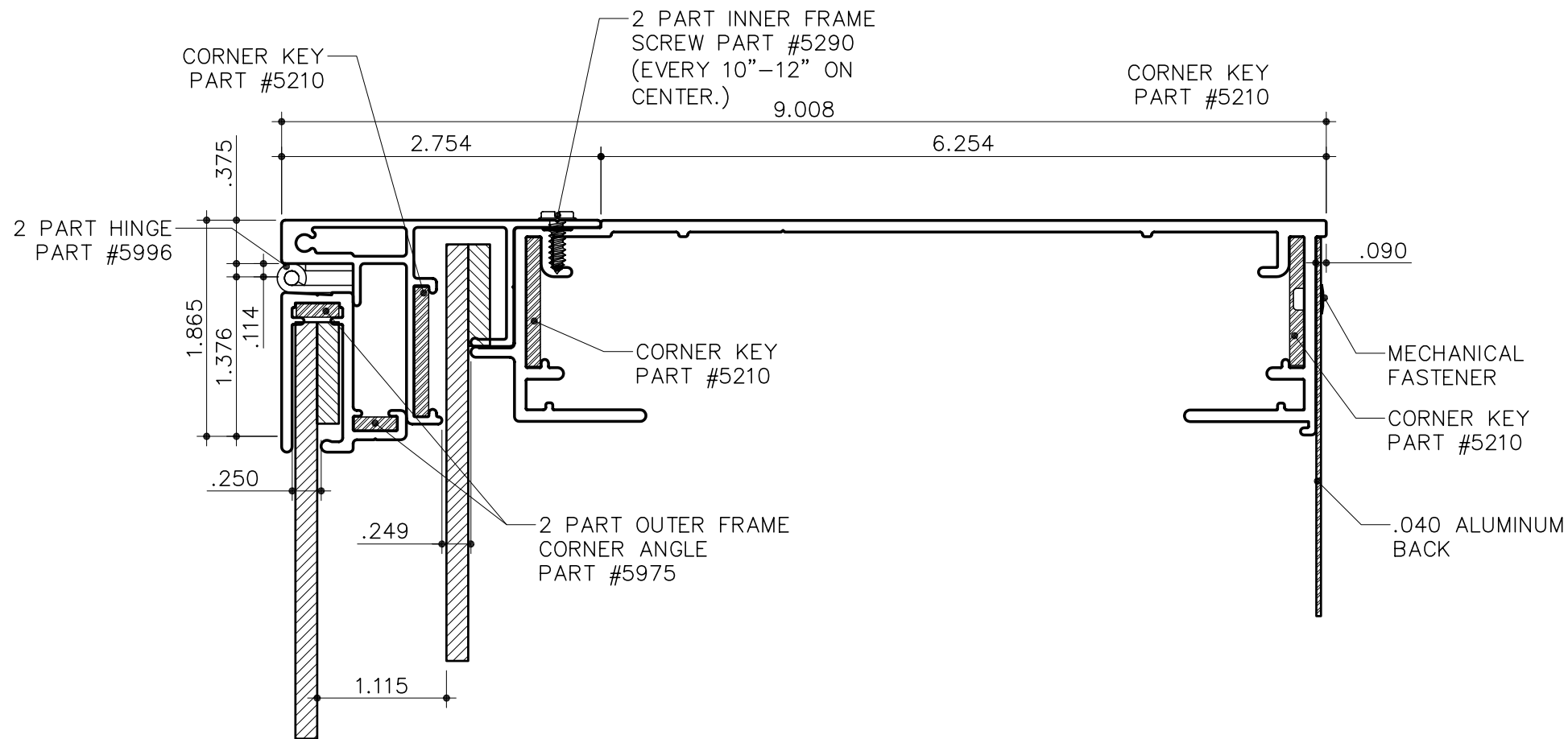
2 Part Inner Frame
 Part #1960

2 Part Outer Frame
 Part #1942



FULL SECTION

SCALE : 3" = 1"

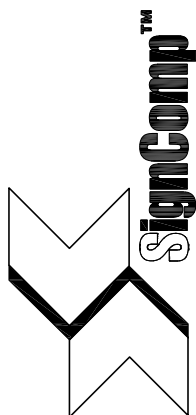


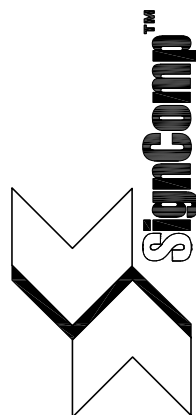
SECTION DETAIL STRUCTURAL (WELDED W/CORNER KEYS)

SCALE : 3/4" = 1"

NOTES:

1. Add 1 3/4" to size of cabinet (vertical or horizontal) when the size of the cabinet is the same as the nominal lamp length.
2. When using a top or bottom hinge application deduct 7/8" from the overall width of cabinet and 1/8" from the overall height of the cabinet to get cut measurements for 2 Part Outer Frame.
3. When using a side hinge application deduct 1/8" from the overall width of cabinet and 7/8" from the overall height of the cabinet to get cut measurements for 2 Part Outer Frame.



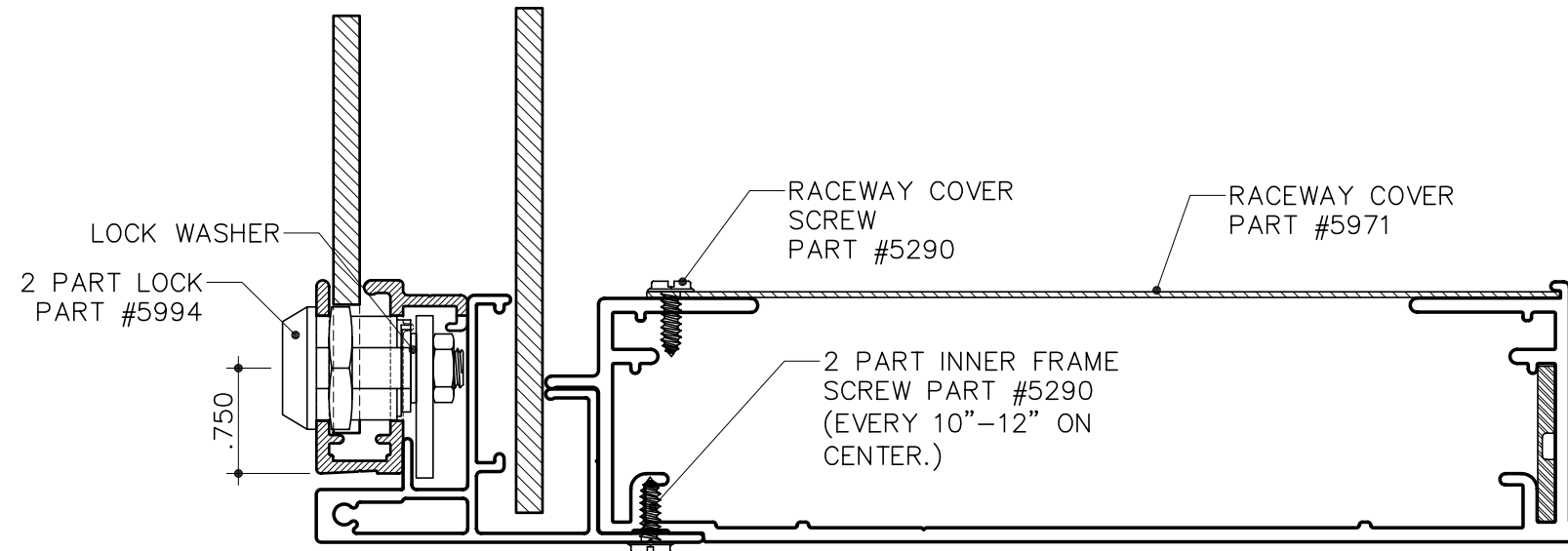


STD-6 for Rigid Faces - Side
 (Lock Assembly)

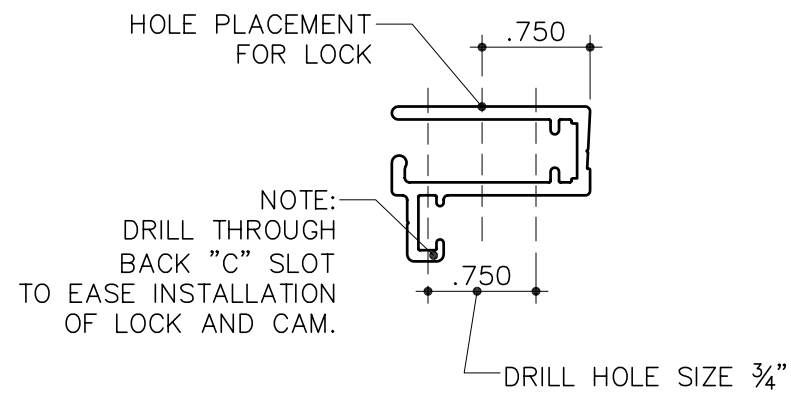
2 Part 8" S/F Body
 Part #1927

2 Part Inner Frame
 Part #1960

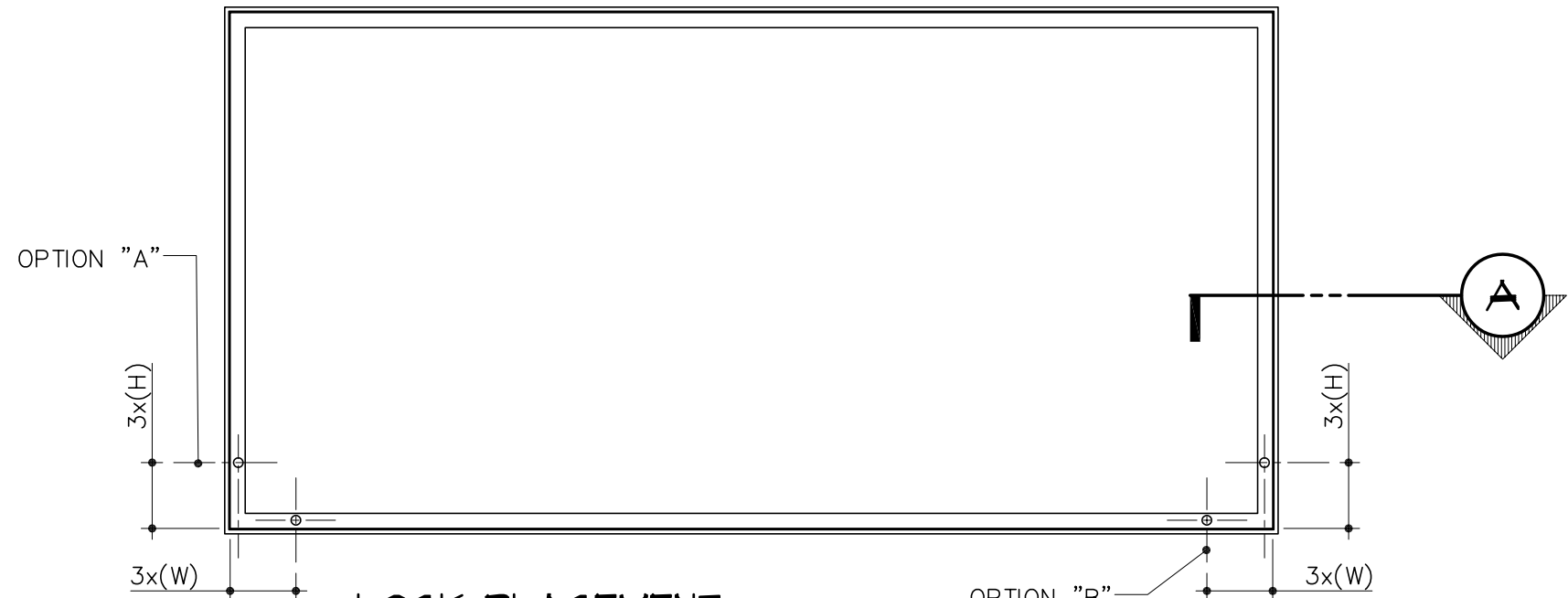
2 Part Outer Frame
 Part #1942



A SIDE SECTION DETAIL
 SCALE : 3/4" = 1"



LOCK HOLE DETAIL
 SCALE : 3/4" = 1"



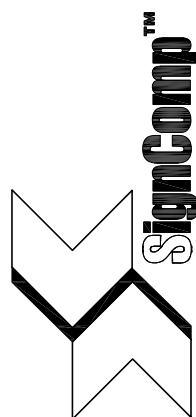
SCALE : 3/4" = 1"

OPTION "A":
 LOCKS ON SIDE.

OPTION "B":
 LOCKS ON BOTTOM

NOTES:

1. Add 1 3/4" to size of cabinet (vertical or horizontal) when the size of the cabinet is the same as the nominal lamp length.
2. Locks can be placed on the side or bottom frame(s), as a guide line for placement of the locks times the height/width in feet by 3 this will give you the distance in inches for the lock placement on the 2 Part Outer Frame.

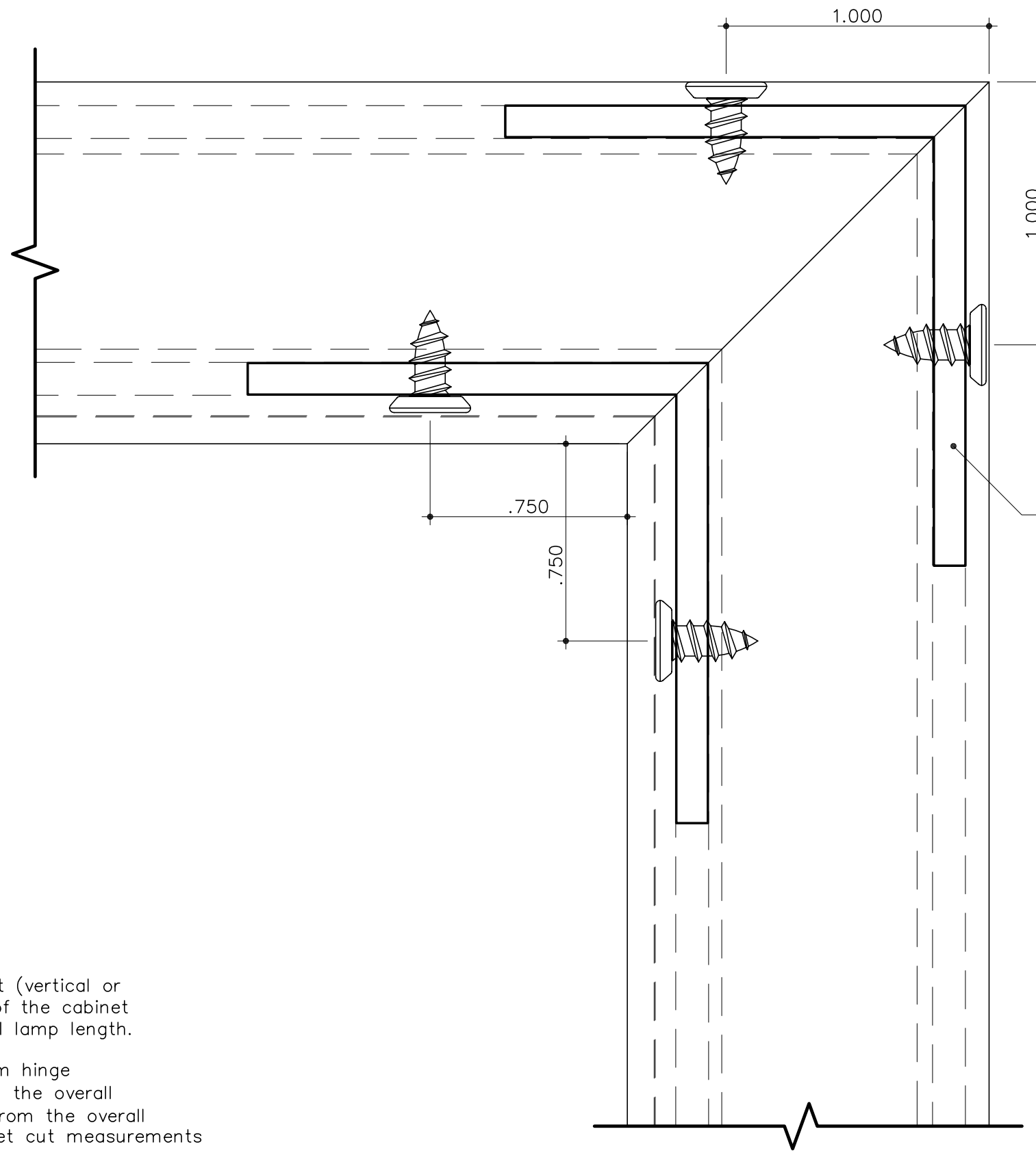


STD-4 for Rigid Faces – Corner Assembly

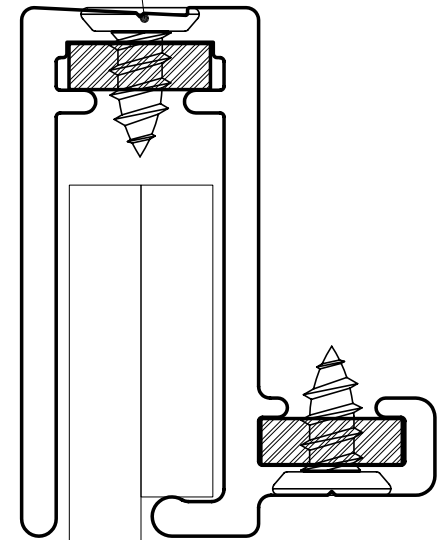
2 Part 12" Body
 Part #1929

2 Part Inner Frame
 Part #1960

2 Part Outer Frame
 Part #1942



2 PART OUTER FRAME
 CORNER ANGLE SCREW
 #8x³/₈" PHILLIPS HEAD (SS)
 PART #5990



2 PART OUTER FRAME
 CORNER ANGLE
 PART #5975

NOTES:

1. Add 1³/₄" to size of cabinet (vertical or horizontal) when the size of the cabinet is the same as the nominal lamp length.
2. When using a top or bottom hinge application deduct 7/8" from the overall width of cabinet and 1 1/8" from the overall height of the cabinet to get cut measurements for 2 Part Outer Frame.
3. When using a side hinge application deduct 1 1/8" from the overall width of cabinet and 7/8" from the overall height of the cabinet to get cut measurements for 2 Part Outer Frame.

2 PART OUTER FRAME CORNER SECTION

SCALE : 2" = 1"

SECTION DETAIL

SCALE : 2" = 1"