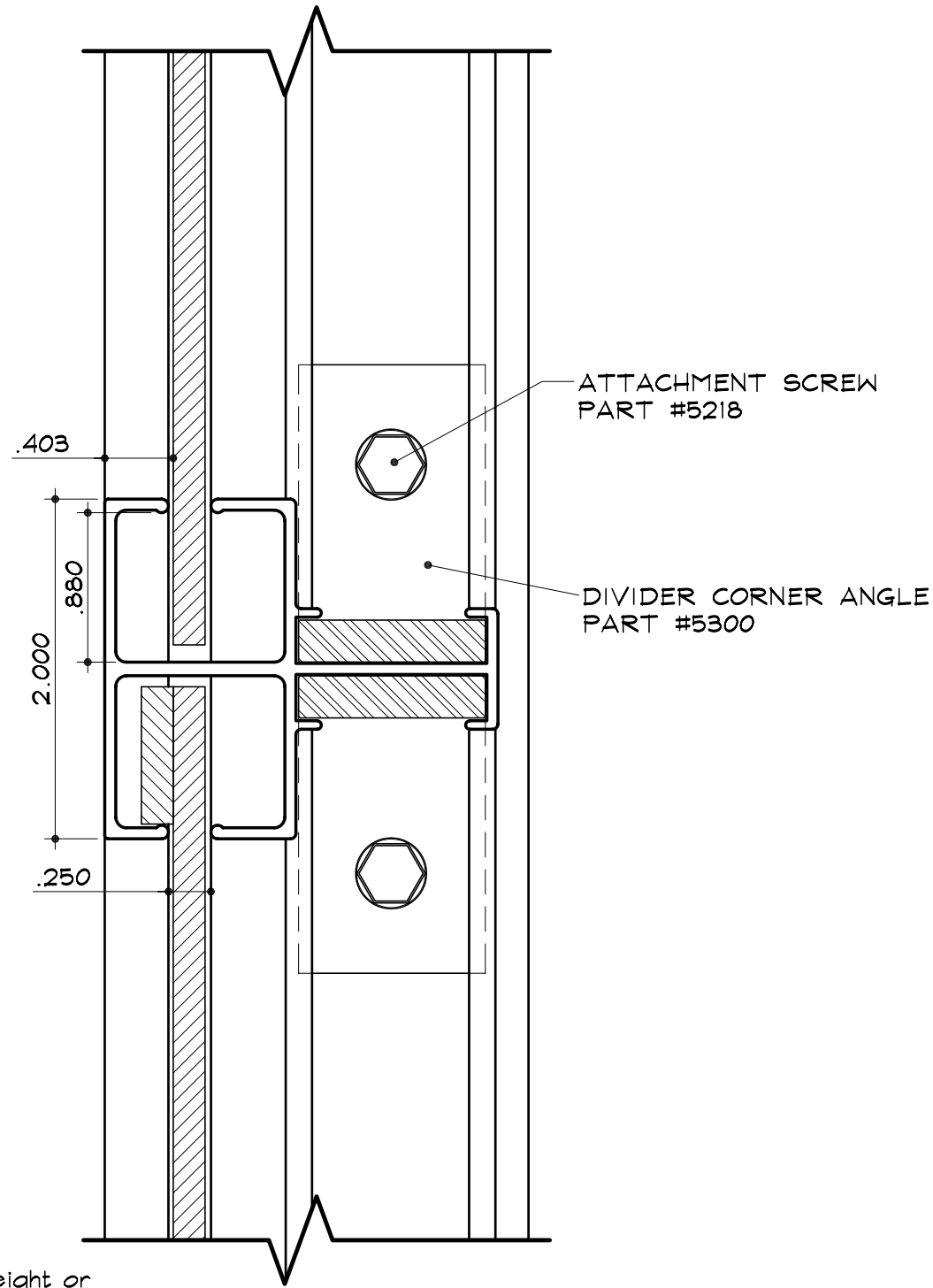


SC-39 for Rigid Faces.

2" Divider
Part #2138

2 1/4" Retainer
Part #2045

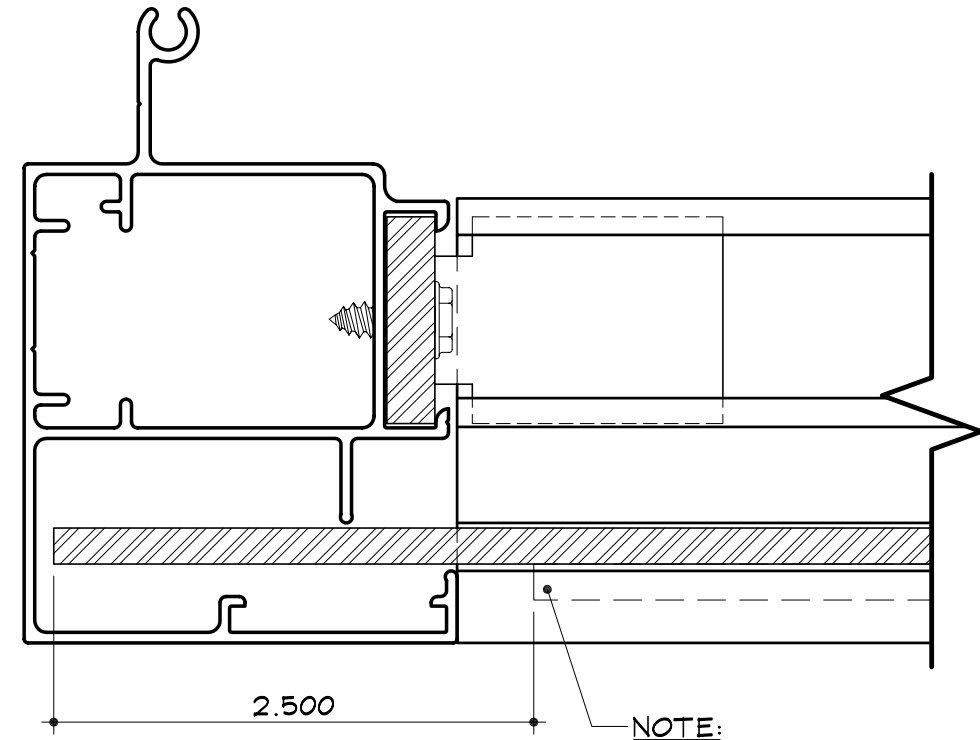


SIDE VIEW

SCALE : 1" = 1"

NOTES:

1. - Deduct 4 1/2" from overall height or width to get cut length of 2" Divider.
2. - When using 2" divider install the hanging bar on the front side of the face. Cut the hanging bar 5" shorter than the length of the face and place it in 2 1/2" in from the outside edge of the face.
3. - On one or both sides use the Dual Frame Part #2065 and the Dual Cover Part #2075 so at the cover can be removed and the faces can be slid in and out easily.
4. - For use with 2 1/4" Retainer (Part #2045) and 2" Retro (Part #2112) ONLY.

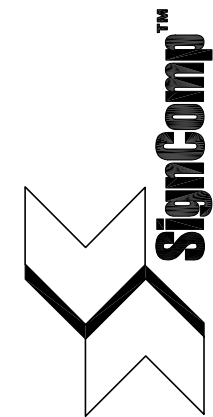


TOP VIEW

SCALE : 1" = 1"

NOTE:

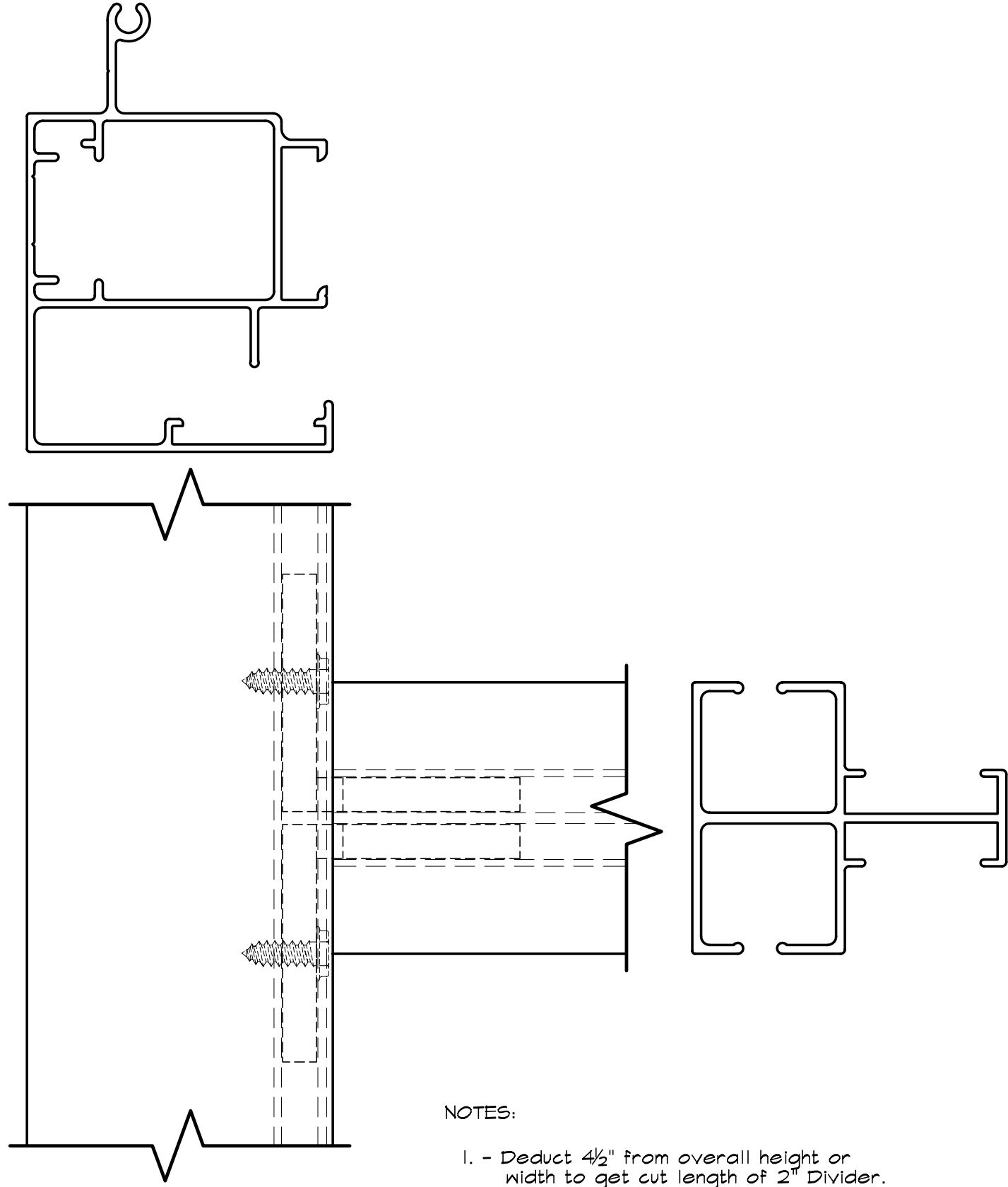
STOP HANGING BAR
2 1/2" FROM END OF
FACE AT EACH END.



SC-39 for Rigid Faces

2" Divider
Part #2138

2 1/4" Retainer
Part #2045

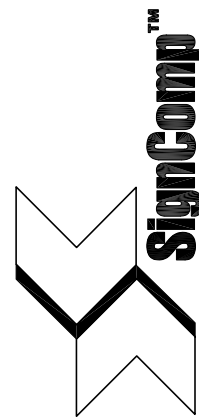


FACE VIEW

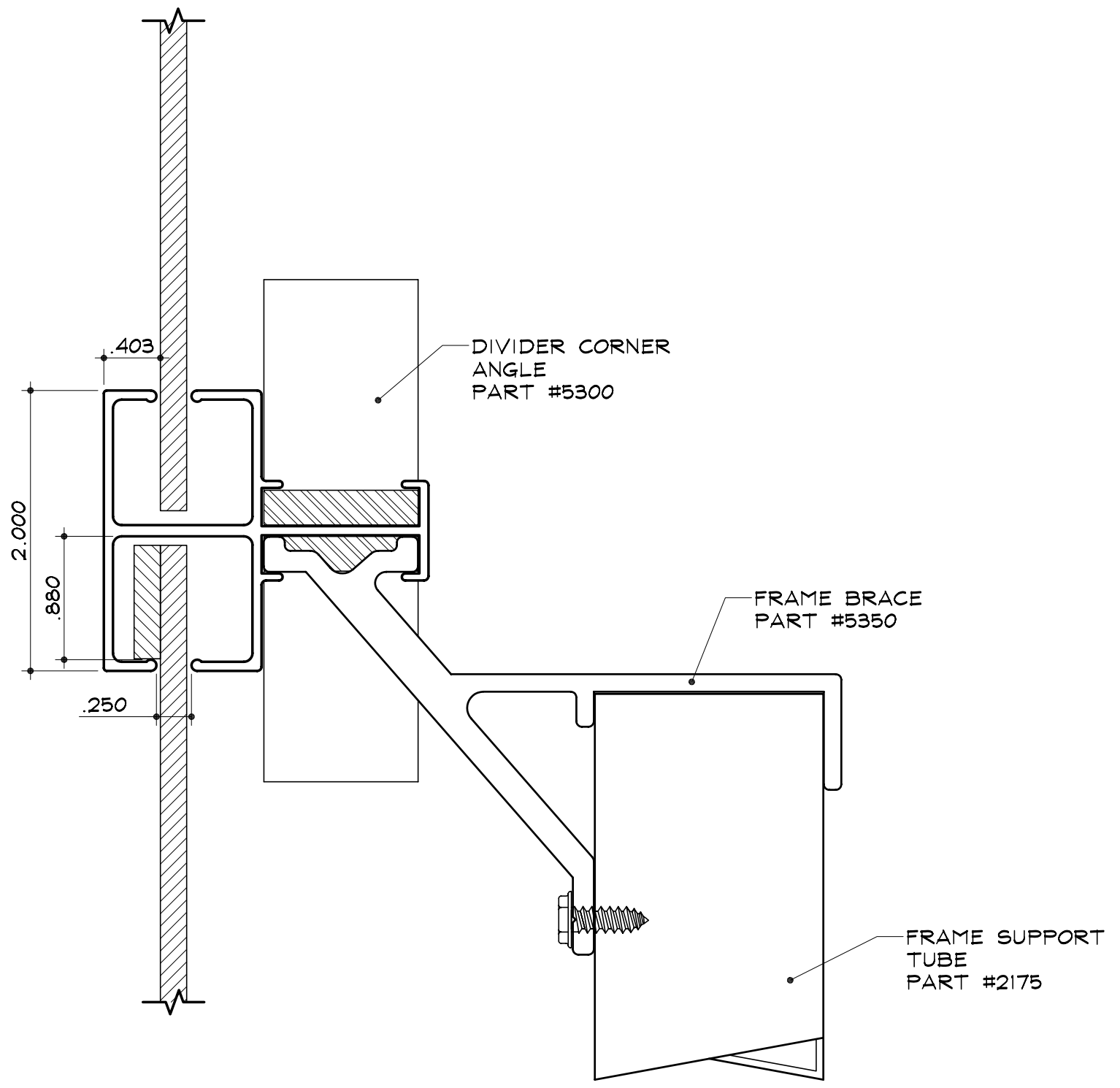
SCALE : 1" = 1"

NOTES:

- 1. - Deduct 4 1/2" from overall height or width to get cut length of 2" Divider.



SC-39 for Rigid Faces
2" Divider
Part #2138
2 1/4" Retainer
Part #2045



SUPPORT DETAIL
SCALE : 1" = 1"

- NOTES:
- 1. - Deduct 4 1/2" from overall height or width to get cut length of 2" Divider.