



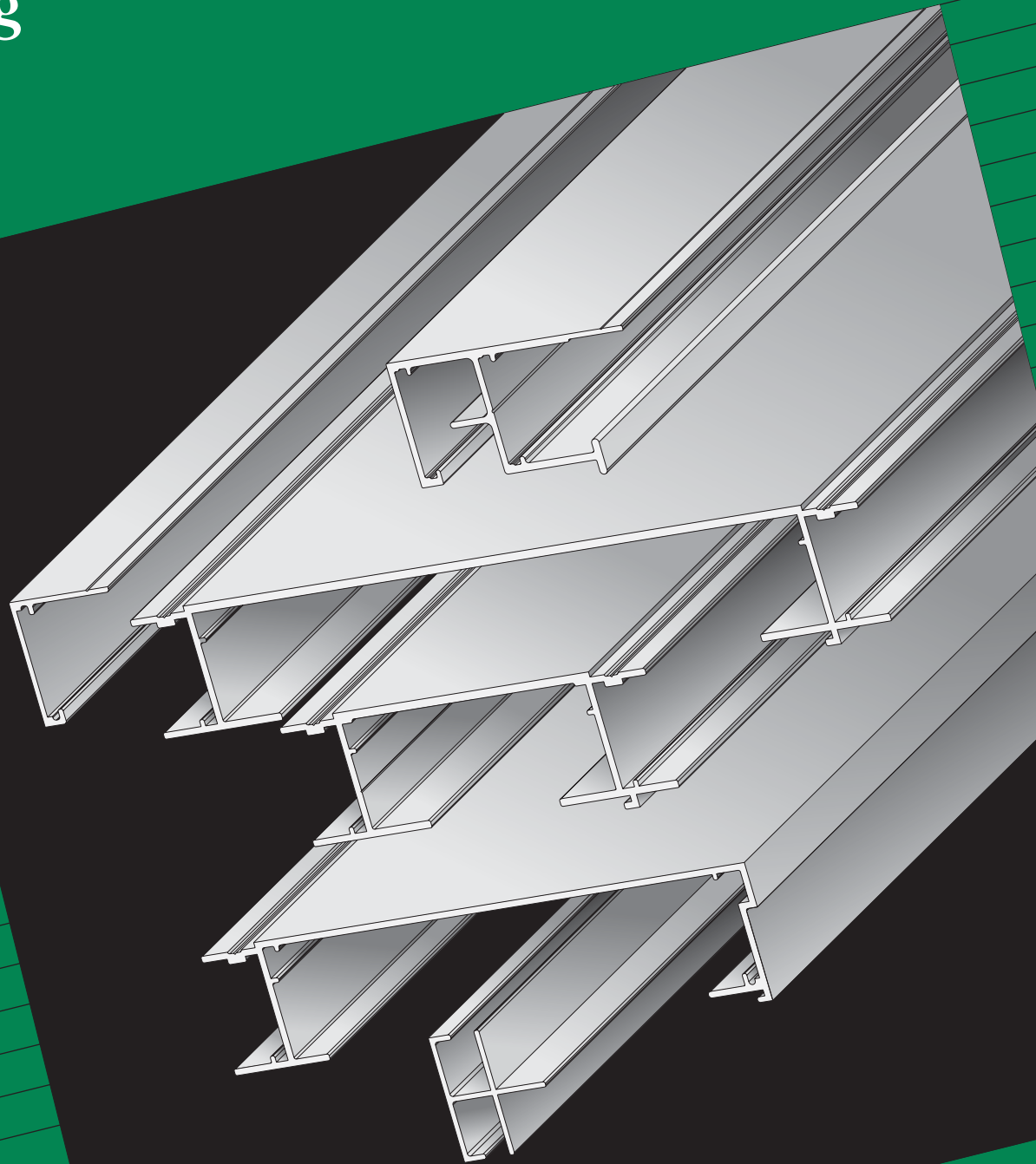
# EconoComp™ Kit Pricing

## PRICE ADJUSTMENT

EFFECTIVE APRIL 1, 2018

- Mill Finish Extrusions & Kits.....+6%
- Pre-Painted Extrusions & Kits.....+6%
- All Accessories and Components.....+6%

Please contact **SignComp** Customer Service for assistance



Note: All dimensions are subject to the tolerance standards of the aluminum extrusion industry. Profile drawings are illustrative and rounded to the nearest 1/16".



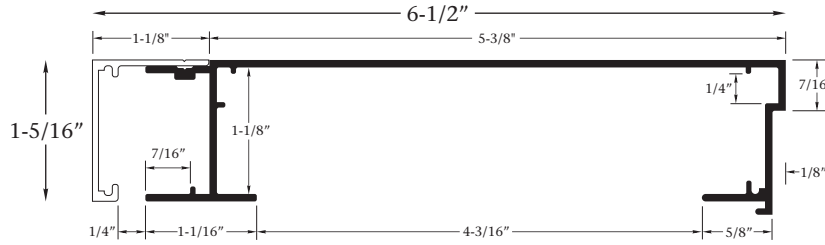
**PRICE ADJUSTMENT**  
EFFECTIVE APRIL 1, 2018  
Mill Finish Extrusions & Kits.....+6%  
Pre-Painted Extrusions & Kits.....+6%  
All Accessories and Components.....+6%  
Please contact SignComp Customer Service for assistance

## Unassembled 6-1/2" Single Face Kits - For Rigid Faces

### Single Face Filler with Econo Molding

Part #2034

Part #2056



Size H x W	Mill Finish	Dk. Bronze	Size H x W	Mill Finish	Dk. Bronze	Size H x W	Mill Finish	Dk. Bronze	Size H x W	Mill Finish	Dk. Bronze	Size H x W	Mill Finish	Dk. Bronze
1 x 1	\$54	\$62	1.5 x 3.5	\$92	\$113	2 x 13	\$226	\$286	3 x 9	\$187	\$235	4 x 9	\$201	\$253
1 x 2	67	80	1.5 x 4	100	122	2 x 14	240	303	3 x 10	201	253	4 x 10	214	271
1 x 3	80	97	1.5 x 5	113	140	2 x 15	254	321	3 x 11	214	271	4 x 11	226	286
1 x 4	92	113	1.5 x 6	126	156	2.5 x 2.5	92	113	3 x 12	226	286	4 x 12	240	303
1 x 5	107	131	1.5 x 8	153	191	2.5 x 3	100	122	3 x 13	240	303	4 x 13	254	321
1 x 6	120	148	1.5 x 10	181	226	2.5 x 3.5	107	131	3 x 14	254	321	4 x 14	267	338
1 x 7	133	166	2 x 2	80	97	2.5 x 4	113	140	3 x 15	267	338	4 x 15	279	356
1 x 8	147	184	2 x 2.5	87	106	2.5 x 5	126	156	3.5 x 3.5	120	148	5 x 5	160	201
1 x 9	160	201	2 x 3	92	113	2.5 x 6	141	173	3.5 x 4	126	156	5 x 6	173	218
1 x 10	173	218	2 x 3.5	100	122	2.5 x 8	167	209	3.5 x 5	141	173	5 x 7	187	235
1 x 11	187	235	2 x 4	107	131	2.5 x 10	192	244	3.5 x 6	153	191	5 x 8	201	253
1 x 12	201	253	2 x 5	120	148	3 x 3	107	131	3.5 x 8	181	226	5 x 9	214	271
1 x 13	214	271	2 x 6	133	166	3 x 3.5	113	140	3.5 x 10	207	260	5 x 10	226	286
1 x 14	226	286	2 x 7	147	184	3 x 4	120	148	4 x 4	133	166	5 x 11	240	303
1 x 15	240	303	2 x 8	160	201	3 x 5	133	166	4 x 5	147	184	5 x 12	254	321
1.5 x 1.5	67	80	2 x 9	173	218	3 x 6	147	184	4 x 6	160	201	6 x 6	187	235
1.5 x 2	74	88	2 x 10	187	235	3 x 7	160	201	4 x 7	173	218	6 x 7	201	253
1.5 x 2.5	80	97	2 x 11	201	253	3 x 8	173	218	4 x 8	187	235	6 x 8	214	271
1.5 x 3	87	106	2 x 12	214	271									

**Included in Sign Cabinet Kit Pricing:**

- Mill finish or Pre-painted.
- Four (4) pieces of cut to size and mitered Single Face Filler, Part #2034.
- Four (4) pieces of cut to size and mitered Econo Molding, Part #2056.
- Twelve (12) Corner Keys, Part #5210.
- Twenty-Four (24) Corner Key Screws, Part #5217.
- One (1) Molding Screws, Part #5290 for every perimeter foot of Econo Molding.
- Packaging.

**Kit Sizes and Availability:**

- It is recommended to order kits 1" over nominal T-12 lamp size to utilize .040 Flat Aluminum Raceway Covers.
- Custom size kits may be cut to any dimension.

**Recommended Lamp Spacing:**

- For flat plastic, illuminated backgrounds - 7" on center, using T-12 lamps.
- For pan formed faces use guideline for T-12 lamp spacing, see General Information on page 2.
- Always place lamps 3/4" from back of sign.

**Not included in Sign Cabinet Kit Pricing:**

- Face and Back.
- Raceway Covers.
- Raceway Cover Screws.
- Ballast Brackets.
- Corner Angles - Not required for assembly.
- Electrical Components.
- Structural Supports.

**General Information:**

- Finishes: See page 2.
- Additional information: See page 2.
- Cut to size and pre-cut kits are available locally through select sign supply distributors.
- Designed for use with Econo Divider: See page 11.

Note: All dimensions are subject to the tolerance standards of the aluminum extrusion industry. Profile drawings are illustrative and rounded to the nearest 1/16".



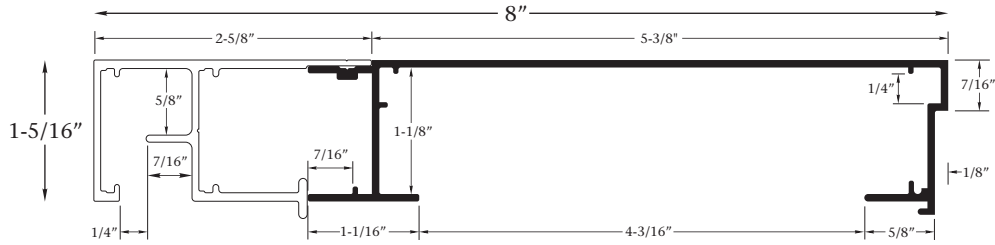
**PRICE ADJUSTMENT**  
EFFECTIVE APRIL 1, 2018  
Mill Finish Extrusions & Kits.....+6%  
Pre-Painted Extrusions & Kits.....+6%  
All Accessories and Components.....+6%  
Please contact SignComp Customer Service for assistance

## Unassembled 8" Single Face Kits - For Rigid Faces

### Single Face Filler with Extended Econo Molding

Part #2034

Part #2058



Size H x W	Mill Finish	Dk. Bronze	Size H x W	Mill Finish	Dk. Bronze	Size H x W	Mill Finish	Dk. Bronze	Size H x W	Mill Finish	Dk. Bronze	Size H x W	Mill Finish	Dk. Bronze
1 x 1	\$68	\$80	1.5 x 3.5	\$125	\$153	2 x 13	\$ 314	\$398	3 x 9	\$258	\$326	4 x 9	\$277	\$350
1 x 2	87	104	1.5 x 4	134	166	2 x 14	335	423	3 x 10	277	350	4 x 10	296	374
1 x 3	107	129	1.5 x 5	153	190	2 x 15	354	446	3 x 11	296	374	4 x 11	314	398
1 x 4	125	153	1.5 x 6	173	216	2.5 x 2.5	125	153	3 x 12	314	398	4 x 12	335	423
1 x 5	144	180	1.5 x 8	210	263	2.5 x 3	134	166	3 x 13	335	423	4 x 13	354	446
1 x 6	164	203	1.5 x 10	249	312	2.5 x 3.5	144	180	3 x 14	354	446	4 x 14	372	471
1 x 7	183	227	2 x 2	107	129	2.5 x 4	153	190	3 x 15	372	471	4 x 15	391	496
1 x 8	202	251	2 x 2.5	116	141	2.5 x 5	173	216	3.5 x 3.5	164	203	5 x 5	221	275
1 x 9	221	275	2 x 3	125	153	2.5 x 6	191	239	3.5 x 4	173	216	5 x 6	238	300
1 x 10	238	300	2 x 3.5	134	166	2.5 x 8	230	289	3.5 x 5	191	239	5 x 7	258	326
1 x 11	258	326	2 x 4	144	180	2.5 x 10	268	337	3.5 x 6	210	263	5 x 8	277	350
1 x 12	277	350	2 x 5	164	203	3 x 3	144	180	3.5 x 8	249	312	5 x 9	296	374
1 x 13	296	374	2 x 6	183	227	3 x 3.5	153	190	3.5 x 10	287	362	5 x 10	314	398
1 x 14	314	398	2 x 7	202	251	3 x 4	164	203	4 x 4	183	227	5 x 11	335	423
1 x 15	335	423	2 x 8	221	275	3 x 5	183	227	4 x 5	202	251	5 x 12	354	446
1.5 x 1.5	87	104	2 x 9	238	300	3 x 6	202	251	4 x 6	221	275	6 x 6	258	326
1.5 x 2	98	117	2 x 10	258	326	3 x 7	221	275	4 x 7	238	300	6 x 7	277	350
1.5 x 2.5	107	129	2 x 11	277	350	3 x 8	238	300	4 x 8	258	326	6 x 8	296	374
1.5 x 3	116	141	2 x 12	296	374									

**Included in Sign Cabinet Kit Pricing:**

- Mill finish or Pre-painted.
- Four (4) pieces of cut to size and mitered Single Face Filler, Part #2034.
- Four (4) pieces of cut to size and mitered Extended Econo Molding, Part #2058.
- Sixteen (16) Corner Keys, Part #5210.
- Twenty-Four (24) Corner Key Screws, Part #5217.
- One (1) Molding Screws, Part #5290 for every perimeter foot of Extended Econo Molding.
- Packaging.

**Kit Sizes and Availability:**

- It is recommended to order kits 1" over nominal T-12 lamp size to utilize .040 Flat Aluminum Raceway Covers.
- Custom size kits may be cut to any dimension.

**Recommended Lamp Spacing:**

- For flat plastic, illuminated backgrounds - 10" on center, using T-12 lamps.
- For pan formed faces use guideline for T-12 lamp spacing, see General Information on page 2.
- Always place lamps 3/4" from back of sign.

**Not included in Sign Cabinet Kit Pricing:**

- Face and Back.
- Raceway Covers.
- Raceway Cover Screws.
- Ballast Brackets.
- Corner Angles - Not required for assembly.
- Electrical Components.
- Structural Supports.

**General Information:**

- Finishes: See page 2.
- Additional information: See page 2.
- Cut to size and pre-cut kits are available locally through select sign supply distributors.
- Extended Econo Molding Part #2058, is not engineered to directly integrate with the Econo Divider, Part #2140. Minimal additional assembly is required using Extended Divider Angle, Part #5335. See page 11.

Note: All dimensions are subject to the tolerance standards of the aluminum extrusion industry. Profile drawings are illustrative and rounded to the nearest 1/16".



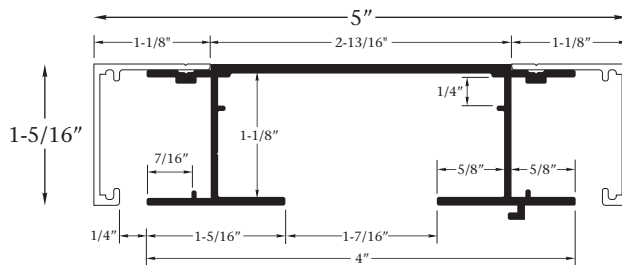
**PRICE ADJUSTMENT**  
EFFECTIVE APRIL 1, 2018  
Mill Finish Extrusions & Kits.....+6%  
Pre-Painted Extrusions & Kits.....+6%  
All Accessories and Components.....+6%  
Please contact SignComp Customer Service for assistance

## Unassembled 5" Double Face Kits - For Rigid Faces

### Medium Double Face Filler with Econo Molding

Part #2036

Part #2056



Size H x W	Mill Finish	Dk. Bronze	Size H x W	Mill Finish	Dk. Bronze	Size H x W	Mill Finish	Dk. Bronze	Size H x W	Mill Finish	Dk. Bronze	Size H x W	Mill Finish	Dk. Bronze
1 x 1	\$57	\$67	1.5 x 3.5	\$104	\$127	2 x 13	\$259	\$330	3 x 9	\$211	\$271	4 x 9	\$ 228	\$290
1 x 2	74	88	1.5 x 4	113	138	2 x 14	276	351	3 x 10	228	290	4 x 10	244	310
1 x 3	88	108	1.5 x 5	129	159	2 x 15	291	371	3 x 11	244	310	4 x 11	259	330
1 x 4	104	127	1.5 x 6	143	181	2.5 x 2.5	104	127	3 x 12	259	330	4 x 12	276	351
1 x 5	120	148	1.5 x 8	174	218	2.5 x 3	113	138	3 x 13	276	351	4 x 13	291	371
1 x 6	135	168	1.5 x 10	205	258	2.5 x 3.5	120	148	3 x 14	291	371	4 x 14	308	391
1 x 7	151	189	2 x 2	88	108	2.5 x 4	129	159	3 x 15	308	391	4 x 15	322	411
1 x 8	167	208	2 x 2.5	98	119	2.5 x 5	143	181	3.5 x 3.5	135	168	5 x 5	183	228
1 x 9	183	228	2 x 3	104	127	2.5 x 6	159	201	3.5 x 4	143	181	5 x 6	200	249
1 x 10	200	249	2 x 3.5	113	138	2.5 x 8	189	238	3.5 x 5	159	201	5 x 7	211	271
1 x 11	211	271	2 x 4	120	148	2.5 x 10	222	279	3.5 x 6	174	218	5 x 8	228	290
1 x 12	228	290	2 x 5	135	168	3 x 3	120	148	3.5 x 8	205	258	5 x 9	244	310
1 x 13	244	310	2 x 6	151	189	3 x 3.5	129	159	3.5 x 10	237	299	5 x 10	259	330
1 x 14	259	330	2 x 7	167	208	3 x 4	135	168	4 x 4	151	189	5 x 11	276	351
1 x 15	276	351	2 x 8	183	228	3 x 5	151	189	4 x 5	167	208	5 x 12	291	371
1.5 x 1.5	74	88	2 x 9	200	249	3 x 6	167	208	4 x 6	183	228	6 x 6	211	271
1.5 x 2	81	99	2 x 10	211	271	3 x 7	183	228	4 x 7	200	249	6 x 7	228	290
1.5 x 2.5	88	108	2 x 11	228	290	3 x 8	200	249	4 x 8	211	271	6 x 8	244	310
1.5 x 3	98	119	2 x 12	244	310									

**Included in Sign Cabinet Kit Pricing:**

- Mill finish or Pre-painted.
- Four (4) pieces of cut to size and mitered Medium Double Face Filler, Part #2036.
- Eight (8) pieces of cut to size and mitered Econo Molding, Part #2056.
- Sixteen (16) Corner Keys, Part #5210.
- Thirty-two (32) Corner Key Screws, Part #5217.
- One (1) Molding Screws, Part #5290 for every perimeter foot of Econo Molding.
- Packaging.

**Kit Sizes and Availability:**

- It is recommended to order kits 1" over nominal T-12 lamp size to utilize .040 Flat Aluminum Raceway Covers.
- Custom size kits may be cut to any dimension.

**Recommended Lamp Spacing:**

- For flat or pan formed faces use guideline for T-12 lamp spacing, see General Information on page 2.

**Not included in Sign Cabinet Kit Pricing:**

- Faces.
- Raceway Covers.
- Raceway Cover Screws.
- Ballast Brackets.
- Corner Angles - Not required for assembly.
- Electrical Components.
- Structural Supports.

**General Information:**

- Finishes: See page 2.
- Additional information: See page 2.
- Cut to size and pre-cut kits are available locally through select sign supply distributors.
- Designed for use with Econo Divider: See page 11.

Note: All dimensions are subject to the tolerance standards of the aluminum extrusion industry. Profile drawings are illustrative and rounded to the nearest 1/16".



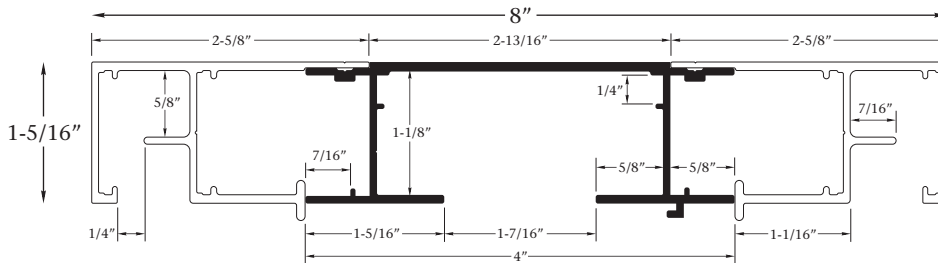
**PRICE ADJUSTMENT**  
EFFECTIVE APRIL 1, 2018  
Mill Finish Extrusions & Kits.....+6%  
Pre-Painted Extrusions & Kits.....+6%  
All Accessories and Components.....+6%  
Please contact SignComp Customer Service for assistance

## Unassembled 8" Double Face Kits - For Rigid Faces

### Medium Double Face Filler with Extended Econo Molding

Part #2036

Part #2058



Size H x W	Mill Finish	Dk. Bronze	Size H x W	Mill Finish	Dk. Bronze	Size H x W	Mill Finish	Dk. Bronze	Size H x W	Mill Finish	Dk. Bronze	Size H x W	Mill Finish	Dk. Bronze
1 x 1	\$85	\$100	1.5 x 3.5	\$165	\$204	2 x 13	\$433	\$548	3 x 9	\$353	\$445	4 x 9	\$378	\$480
1 x 2	111	134	1.5 x 4	177	222	2 x 14	460	583	3 x 10	378	480	4 x 10	407	515
1 x 3	137	168	1.5 x 5	205	255	2 x 15	487	618	3 x 11	407	515	4 x 11	433	548
1 x 4	165	204	1.5 x 6	233	291	2.5 x 2.5	165	204	3 x 12	433	548	4 x 12	460	583
1 x 5	191	238	1.5 x 8	286	358	2.5 x 3	177	222	3 x 13	460	583	4 x 13	487	618
1 x 6	219	273	1.5 x 10	338	427	2.5 x 3.5	191	238	3 x 14	487	618	4 x 14	513	651
1 x 7	245	309	2 x 2	137	168	2.5 x 4	205	255	3 x 15	513	651	4 x 15	541	687
1 x 8	272	340	2 x 2.5	151	186	2.5 x 5	233	291	3.5 x 3.5	219	273	5 x 5	299	376
1 x 9	299	376	2 x 3	165	204	2.5 x 6	258	322	3.5 x 4	233	291	5 x 6	326	411
1 x 10	326	411	2 x 3.5	177	222	2.5 x 8	312	393	3.5 x 5	258	322	5 x 7	353	445
1 x 11	353	445	2 x 4	191	238	2.5 x 10	365	463	3.5 x 6	286	358	5 x 8	378	480
1 x 12	378	480	2 x 5	219	273	3 x 3	191	238	3.5 x 8	338	427	5 x 9	407	515
1 x 13	407	515	2 x 6	245	309	3 x 3.5	205	255	3.5 x 10	393	497	5 x 10	433	548
1 x 14	433	548	2 x 7	272	340	3 x 4	219	273	4 x 4	245	309	5 x 11	460	583
1 x 15	460	583	2 x 8	299	376	3 x 5	245	309	4 x 5	272	340	5 x 12	487	618
1.5 x 1.5	111	134	2 x 9	326	411	3 x 6	272	340	4 x 6	299	376	6 x 6	353	445
1.5 x 2	124	152	2 x 10	353	445	3 x 7	299	376	4 x 7	326	411	6 x 7	378	480
1.5 x 2.5	137	168	2 x 11	378	480	3 x 8	326	411	4 x 8	353	445	6 x 8	407	515
1.5 x 3	151	186	2 x 12	407	515									

**Included in Sign Cabinet Kit Pricing:**

- Mill finish or Pre-painted.
- Four (4) pieces of cut to size and mitered Medium Double Face Filler, Part #2036.
- Eight (8) pieces of cut to size and mitered Extended Econo Molding, Part #2058.
- Twenty-four (24) Corner Keys, Part #5210.
- Thirty-two (32) Corner Key Screws, Part #5217.
- One (1) Molding Screws, Part #5290 for every perimeter foot of Extended Econo Molding.
- Packaging.

**Kit Sizes and Availability:**

- It is recommended to order kits 1" over nominal T-12 lamp size to utilize .040 Flat Aluminum Raceway Covers.
- Custom size kits may be cut to any dimension.

**Recommended Lamp Spacing:**

- For flat or pan formed faces use guideline for T-12 lamp spacing, see General Information on page 2.

**Not included in Sign Cabinet Kit Pricing:**

- Faces.
- Raceway Covers.
- Raceway Cover Screws.
- Ballast Brackets.
- Corner Angles - Not required for assembly.
- Electrical Components.
- Structural Supports.

**General Information:**

- Finishes: See page 2.
- Additional information: See page 2.
- Cut to size and pre-cut kits are available locally through select sign supply distributors.
- Extended Econo Molding Part #2058, is not engineered to directly integrate with the Econo Divider, Part #2140. Minimal additional assembly is required using Extended Divider Angle, Part #5335. See page 11.

Note: All dimensions are subject to the tolerance standards of the aluminum extrusion industry. Profile drawings are illustrative and rounded to the nearest 1/16".



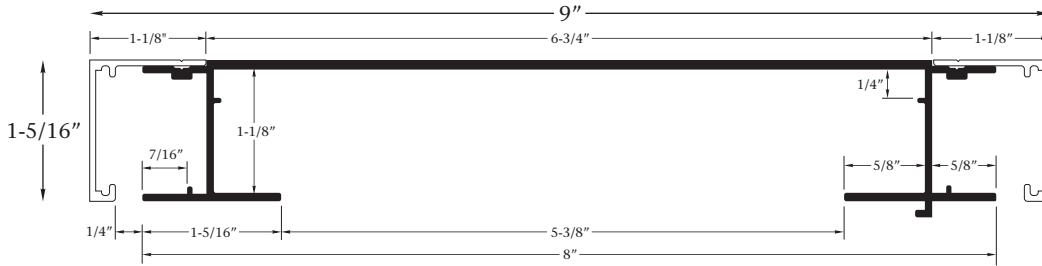
**PRICE ADJUSTMENT**  
EFFECTIVE APRIL 1, 2018  
Mill Finish Extrusions & Kits.....+6%  
Pre-Painted Extrusions & Kits.....+6%  
All Accessories and Components.....+6%  
Please contact SignComp Customer Service for assistance

## Unassembled 9" Double Face Kits - For Rigid Faces

### Large Double Face Filler with Econo Molding

Part #2032

Part #2056



Size H x W	Mill Finish	Dk. Bronze	Size H x W	Mill Finish	Dk. Bronze	Size H x W	Mill Finish	Dk. Bronze	Size H x W	Mill Finish	Dk. Bronze	Size H x W	Mill Finish	Dk. Bronze
1 x 1	\$68	\$81	1.5 x 3.5	\$130	\$163	2 x 13	\$338	\$431	3 x 9	\$276	\$351	4 x 9	\$298	\$376
1 x 2	88	108	1.5 x 4	142	174	2 x 14	358	458	3 x 10	298	376	4 x 10	318	404
1 x 3	109	134	1.5 x 5	163	203	2 x 15	379	484	3 x 11	318	404	4 x 11	338	431
1 x 4	130	163	1.5 x 6	183	228	2.5 x 2.5	130	163	3 x 12	338	431	4 x 12	358	458
1 x 5	151	189	1.5 x 8	224	284	2.5 x 3	142	174	3 x 13	358	458	4 x 13	379	484
1 x 6	170	216	1.5 x 10	266	337	2.5 x 3.5	151	189	3 x 14	379	484	4 x 14	401	511
1 x 7	191	244	2 x 2	109	134	2.5 x 4	163	203	3 x 15	401	511	4 x 15	422	539
1 x 8	215	271	2 x 2.5	120	148	2.5 x 5	183	228	3.5 x 3.5	170	216	5 x 5	234	295
1 x 9	234	295	2 x 3	130	163	2.5 x 6	203	256	3.5 x 4	183	228	5 x 6	256	322
1 x 10	256	322	2 x 3.5	142	174	2.5 x 8	244	310	3.5 x 5	203	256	5 x 7	276	351
1 x 11	276	351	2 x 4	151	189	2.5 x 10	286	363	3.5 x 6	224	284	5 x 8	298	376
1 x 12	298	376	2 x 5	170	216	3 x 3	151	189	3.5 x 8	266	337	5 x 9	318	404
1 x 13	318	404	2 x 6	191	244	3 x 3.5	163	203	3.5 x 10	308	391	5 x 10	338	431
1 x 14	338	431	2 x 7	215	271	3 x 4	170	216	4 x 4	191	244	5 x 11	358	458
1 x 15	358	458	2 x 8	234	295	3 x 5	191	244	4 x 5	215	271	5 x 12	379	484
1.5 x 1.5	88	108	2 x 9	256	322	3 x 6	215	271	4 x 6	234	295	6 x 6	276	351
1.5 x 2	100	122	2 x 10	276	351	3 x 7	234	295	4 x 7	256	322	6 x 7	298	376
1.5 x 2.5	109	134	2 x 11	298	376	3 x 8	256	322	4 x 8	276	351	6 x 8	318	404
1.5 x 3	120	148	2 x 12	318	404									

**Included in Sign Cabinet Kit Pricing:**

- Mill finish or Pre-painted.
- Four (4) pieces of cut to size and mitered Large Double Face Filler, Part #2032.
- Eight (8) pieces of cut to size and mitered Econo Molding, Part #2056.
- Sixteen (16) Corner Keys, Part #5210.
- Thirty-two (32) Corner Key Screws, Part #5217.
- One (1) Molding Screws, Part #5290 for every perimeter foot of Econo Molding.
- Packaging.

**Kit Sizes and Availability:**

- It is recommended to order kits 1" over nominal T-12 lamp size to utilize .040 Flat Aluminum Raceway Covers.
- Custom size kits may be cut to any dimension.

**Recommended Lamp Spacing:**

- For flat plastic, illuminated backgrounds - 7" on center, using T-12 lamps.
- For pan formed faces use guideline for T-12 lamp spacing, see General Information on page 2.

**Not included in Sign Cabinet Kit Pricing:**

- Faces.
- Raceway Covers.
- Raceway Cover Screws.
- Ballast Brackets.
- Corner Angles - Not required for assembly.
- Electrical Components.
- Structural Supports.

**General Information:**

- Finishes: See page 2.
- Additional information: See page 2.
- Cut to size and pre-cut kits are available locally through select sign supply distributors.
- Designed for use with Econo Divider: See page 11.



Note: All dimensions are subject to the tolerance standards of the aluminum extrusion industry. Profile drawings are illustrative and rounded to the nearest 1/16".



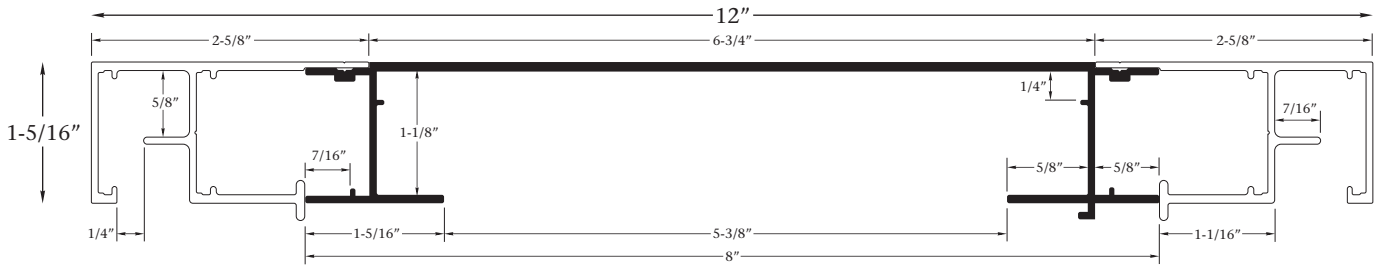
**PRICE ADJUSTMENT**  
EFFECTIVE APRIL 1, 2018  
Mill Finish Extrusions & Kits.....+6%  
Pre-Painted Extrusions & Kits.....+6%  
All Accessories and Components.....+6%  
Please contact SignComp Customer Service for assistance

## Unassembled 12" Double Face Kits - For Rigid Faces

### Large Double Face Filler with Extended Econo Molding

Part #2032

Part #2058



Size H x W	Mill Finish	Dk. Bronze	Size H x W	Mill Finish	Dk. Bronze	Size H x W	Mill Finish	Dk. Bronze	Size H x W	Mill Finish	Dk. Bronze	Size H x W	Mill Finish	Dk. Bronze
1 x 1	\$95	\$113	1.5 x 3.5	\$190	\$237	2 x 13	\$511	\$650	3 x 9	\$414	\$526	4 x 9	\$446	\$567
1 x 2	126	154	1.5 x 4	206	257	2 x 14	543	692	3 x 10	446	567	4 x 10	479	609
1 x 3	159	195	1.5 x 5	238	299	2 x 15	575	732	3 x 11	479	609	4 x 11	511	650
1 x 4	190	237	1.5 x 6	271	339	2.5 x 2.5	190	237	3 x 12	511	650	4 x 12	543	692
1 x 5	223	277	1.5 x 8	335	423	2.5 x 3	206	257	3 x 13	543	692	4 x 13	575	732
1 x 6	255	319	1.5 x 10	398	505	2.5 x 3.5	223	277	3 x 14	575	732	4 x 14	608	775
1 x 7	287	359	2 x 2	159	195	2.5 x 4	238	299	3 x 15	608	775	4 x 15	641	815
1 x 8	319	403	2 x 2.5	173	217	2.5 x 5	271	339	3.5 x 3.5	255	319	5 x 5	352	444
1 x 9	352	444	2 x 3	190	237	2.5 x 6	302	382	3.5 x 4	271	339	5 x 6	384	484
1 x 10	384	484	2 x 3.5	206	257	2.5 x 8	368	464	3.5 x 5	302	382	5 x 7	414	526
1 x 11	414	526	2 x 4	223	277	2.5 x 10	431	546	3.5 x 6	335	423	5 x 8	446	567
1 x 12	446	567	2 x 5	255	319	3 x 3	223	277	3.5 x 8	398	505	5 x 9	479	609
1 x 13	479	609	2 x 6	287	359	3 x 3.5	238	299	3.5 x 10	463	588	5 x 10	511	650
1 x 14	511	650	2 x 7	319	403	3 x 4	255	319	4 x 4	287	359	5 x 11	543	692
1 x 15	543	692	2 x 8	352	444	3 x 5	287	359	4 x 5	319	403	5 x 12	575	732
1.5 x 1.5	126	154	2 x 9	384	484	3 x 6	319	403	4 x 6	352	444	6 x 6	414	526
1.5 x 2	143	174	2 x 10	414	526	3 x 7	352	444	4 x 7	384	484	6 x 7	446	567
1.5 x 2.5	159	195	2 x 11	446	567	3 x 8	384	484	4 x 8	414	526	6 x 8	479	609
1.5 x 3	173	217	2 x 12	479	609									

**Included in Sign Cabinet Kit Pricing:**

- Mill finish or Pre-painted.
- Four (4) pieces of cut to size and mitered Large Double Face Filler, Part #2032.
- Eight (8) pieces of cut to size and mitered Extended Econo Molding, Part #2058.
- Twenty-four (24) Corner Keys, Part #5210.
- Thirty-two (32) Corner Key Screws, Part #5217.
- One (1) Molding Screws, Part #5290 for every perimeter foot of Extended Econo Molding.
- Packaging.

**Kit Sizes and Availability:**

- It is recommended to order kits 1" over nominal T-12 lamp size to utilize .040 Flat Aluminum Raceway Covers.
- Custom size kits may be cut to any dimension.

**Recommended Lamp Spacing:**

- For flat plastic, illuminated backgrounds - 10" on center, using T-12 lamps.
- For pan formed faces use guideline for T-12 lamp spacing, see General Information on page 2.

**Not included in Sign Cabinet Kit Pricing:**

- Faces.
- Raceway Covers.
- Raceway Cover Screws.
- Ballast Brackets.
- Corner Angles - Not required for assembly.
- Electrical Components.
- Structural Supports.

**General Information:**

- Finishes: See page 2.
- Additional information: See page 2.
- Cut to size and pre-cut kits are available locally through select sign supply distributors.
- Extended Econo Molding Part #2058, is not engineered to directly integrate with the Econo Divider, Part #2140. Minimal additional assembly is required using Extended Divider Angle, Part #5335. See page 11.

Environmentally Friendly



Products • Processes • Facility

***Our Mission:*** To promote business and personal practices that will decrease our impact on the environment and minimize our carbon footprint by reducing the demands placed upon our planet in an earth-friendly way.



3032 Walker Ridge Dr. NW  
Grand Rapids, MI 49544  
U.S.A.  
toll free: (877) 784-0405 (US and Canada)  
local: (616) 784-0405  
fax: (616) 784-0411  
e-mail: [signcomp@signcomp.com](mailto:signcomp@signcomp.com)  
[canada@signcomp.com](mailto:canada@signcomp.com)  
[www.signcomp.com](http://www.signcomp.com)  
© SignComp LLC